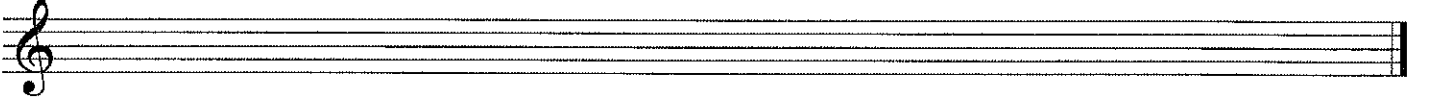


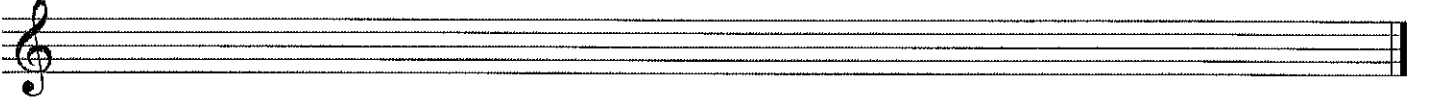
TEORİ BİLGİSİ

1. Kromatik gamları yazınız.

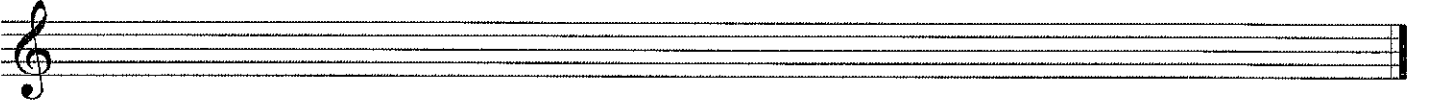
As-dur (tonal)



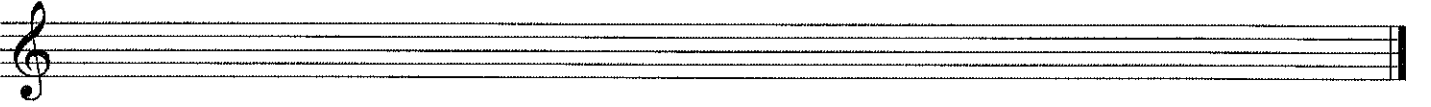
As-dur (atonal)



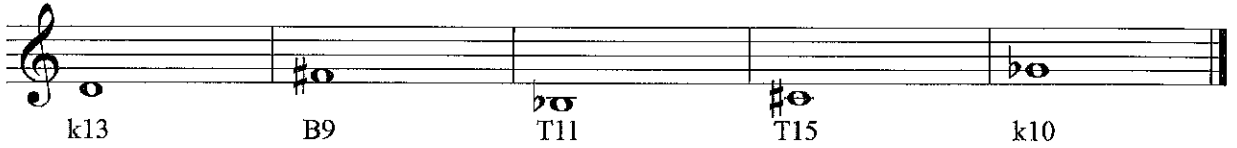
Gis-moll (tonal)



Gis-moll (atonal)



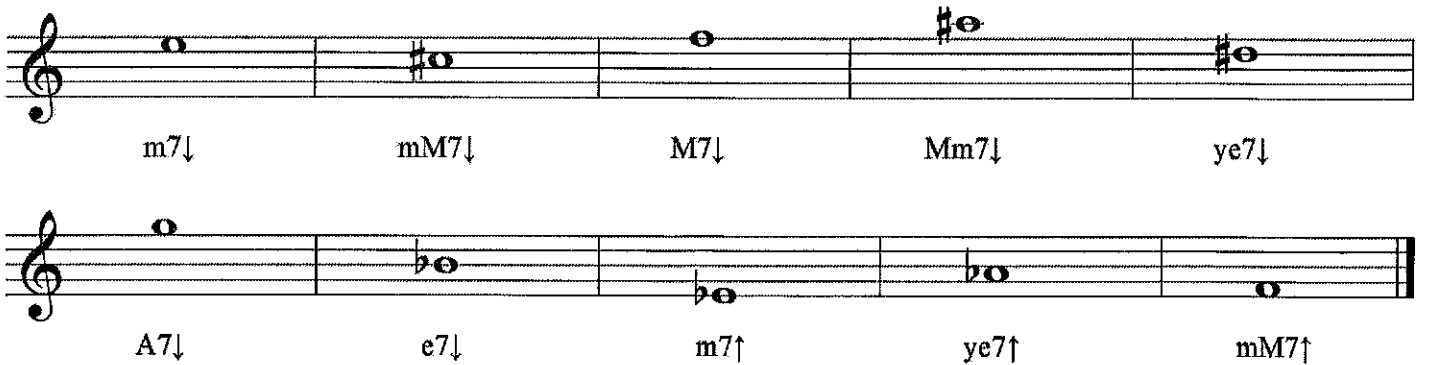
2. Aralıkları kurunuz (hepsi yukarıya).



3. Akorları kurunuz (yukarıya ya da aşağıya).

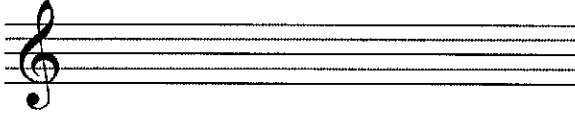


4. Akorları kurunuz (yukarıya ya da aşağıya).



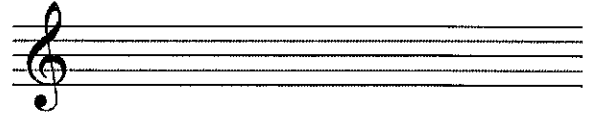
5. İstenilen tonalitelere dominant yedili akoru kurun, belirlendiği akora çözünüz.

H-dur



I

Es-moll

VI₃₅

6. Akorların çeşidini bulun, hangi tonalitelere ait olabileceğini bulun.

Akor	Majör tonaliteler	minör tonaliteler

İFADE	12.	Agitato	
	13.	Cantabile	
	14.	Deciso	
	15.	Risoluto	
	16.	Delicato	
	17.	Dolce	
	18.	Dolcissimo	
	19.	Doloroso	
	20.	Espressivo	
	21.	Melodico / Melodioso	
	22.	Morendo	
	23.	Mormorando	
	24.	Scherzando	

* Önceki sınıfların terimlerini bilmesi zorunludur.

DUYUŞ - DİKTE

1a. Duyuş (bileşik aralıklar, T15'ye kadar)

1) T12	2) k9	3) B13	4) T15	5) k13
--------	-------	--------	--------	--------

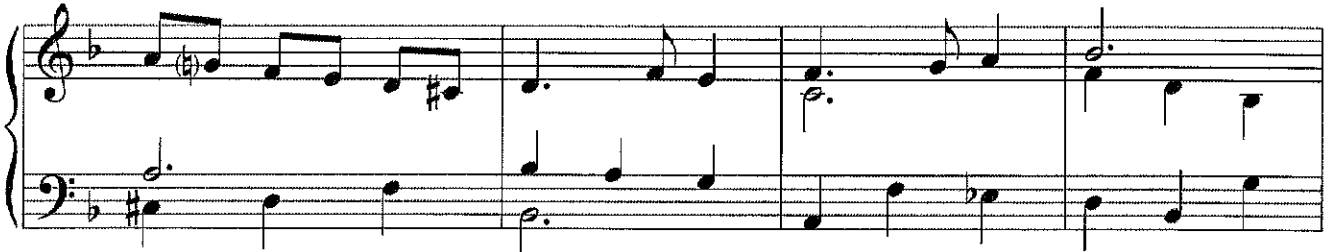
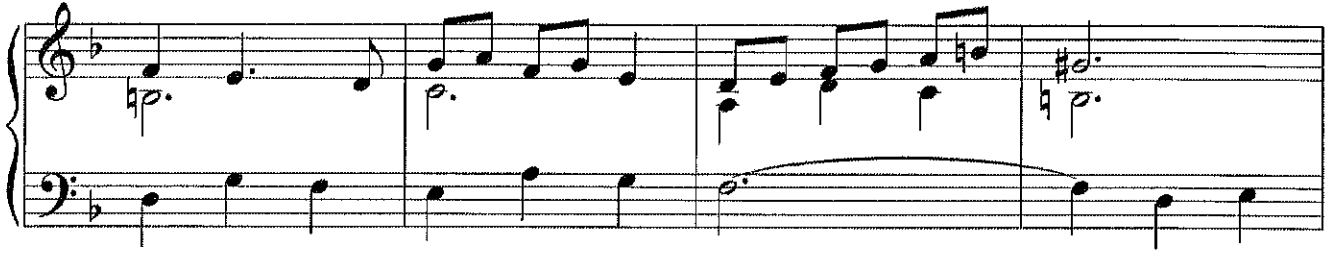
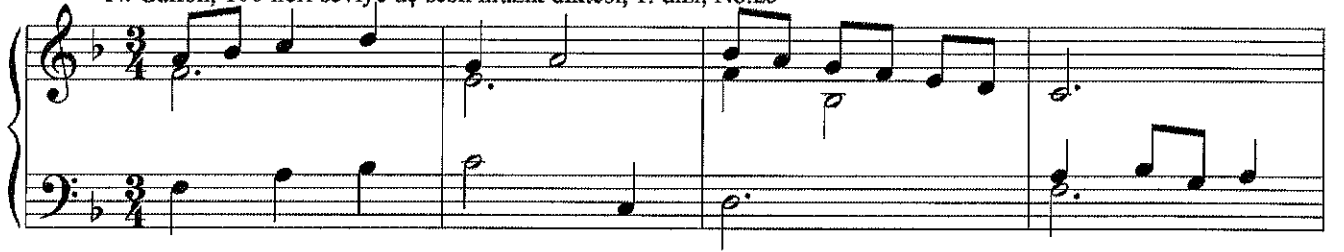
1b. Duyuş

(3 sesli akorlar kök ve çevrim durumunda, 4 sesli akorlar kök durumunda)

1)	2)	3)	4)	5)	6)	7)	8)	9)	10)
----	----	----	----	----	----	----	----	----	-----

2a. Dikte (3sesli)

N. Gallon, 100 ileri seviye üç sesli müzik diktesi, 1. dizi, No.25



2b. Dikte (1 sesli)

N.-Gallon, 200 dikte, 4. dizi, No.118

The musical notation is presented on four staves. The first staff begins with a treble clef, a key signature of two flats (B-flat major), and a 3/4 time signature. The melody is written on a single staff. The second staff continues the melody, featuring a triplet of eighth notes. The third and fourth staves complete the piece, ending with a double bar line. The music is written in a clear, legible font with standard musical symbols.

OKUMA

Ritim deşifresi (bona)



Entonasyon deşifresi (sesle)



Eşlikli deşifre (sesle, sayfanın öbür tarafına bakınız)

Ein Traum

from 6 songs after H.Heine Edward Grieg (1843 - 1907)

